



EECi: Corridor to Thailand Innovation and Investment

Dr. Ravipat Phudpong,
Director of Smart Industry Collaboration Division,
Eastern Economic Corridor of Innovation (EECi)
29th October 2020

Background of EEC & EECi

Special Zone : Eastern Economic Corridor (EEC) : 13,000 Km²

Public and Private investment
(\$ 43 Billion USD in the first 5 years)



Strategic location:

- > 30 industrial estates
- Gate way to ASEAN



An Innovation Component of EEC



**Wangchan Valley,
Rayong Province**

High-speed train & Dual-track railway



**Map Ta Phut
Sea Port**

**Smart city
development**

**Industry
development**

U- Tapao International Airport

EECi Overall Development & Zoning

Community Zone



Community Mall
Hotel & Serviced Apartment
International School

Highway No. 344
(Ban Bueng - Klaeng)

Gas Station

PTT Art Gallery & Energy Museum

Innovation Zone 1

EECi Headquarters

Education Zone

Kamnoetvidya Science Academy
(KVIS)

Vidyasirimedhi
Institute of Science
and Technology
(VISTEC)

Wangchan
Forest Project



PTTEP Technology
and Innovation
Center

Synchrotron Facility
(3 GeV)

Innovation Zone 2

Innovative Agriculture
Learning Center

Utility Center

Solar Farm

Wangchan Valley,
Rayong Province

Total Area 3,454 Rai (552.64 ha)

• Community Zone	178 Rai (28.48 ha)
• Education Zone	1,186 Rai (189.76 ha)
• Innovation Zone 1	989 Rai (158.24 ha)
• Innovation Zone 2	946 Rai (151.36 ha)
• Innovative Agriculture Learning Center	155 Rai (24.8 ha)

EECi: A Translational Platform for Frontier Industries

TRL:

1

2

3

4

5

6

7

8

9

TRL4. Key elements validated in laboratory environment

TRL5. Key elements validated in relevant environment

TRL7. System prototype demonstration in an operational environment

TRL8. Actual system qualified through test and demonstration

TRL9. Actual system proven through successful mission operations

Frontier Technology Development

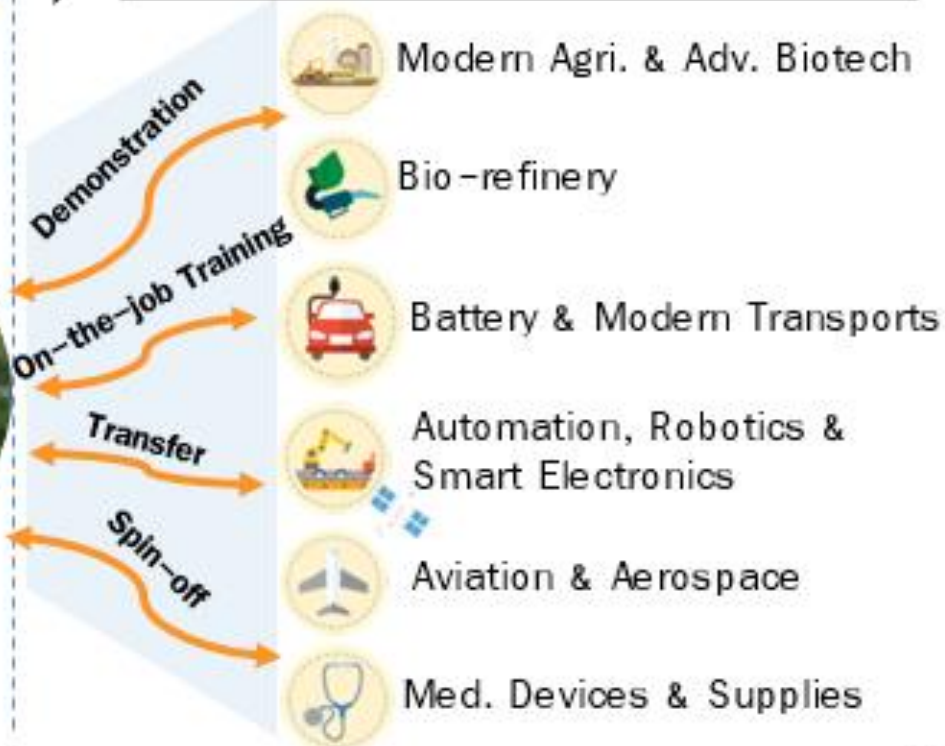
Translational Research Platforms In EECi

Frontier Industry Development



Pilot Plant Test Bed Testing Facilities

Living Lab Proving Ground Regulatory Sandbox



EECi Technology Platforms

EECi | BIO POLIS Biotechnology Platform

- Innovative Agriculture
- Chemical and Bioprocess Technology
- Functional Ingredients

FdInnopolis an anchor of EECi Food Innovation Platform

- IoT for Food
- Food Automation



EECi | ARI POLIS

Automation, Robotics and Intelligent Electronics Platform

- Sustainable Manufacturing Center
- Smart Agriculture Center
- Smart Living Center
- High Performance Computing Center

EECi | SPACE INNOPSIS

Aviation and Aerospace Technology Platform

- High Altitude Pseudo-Satellite Unmanned Aerial Vehicle (HAPS UAV) and Global Navigation Satellite System (GNSS)
- Aerospace NQI



SYNCHROTRON
THAILAND
CENTRAL LAB

SLRI_SPS-II

- Latest (4th generation) and largest synchrotron light source in ASEAN
- Infrastructure for innovation-oriented cooperation of academic and industrial research

เมืองนวัตกรรมชีวภาพ (BIOPOLIS)

- อุตสาหกรรมเกษตรสมัยใหม่ (Modern Agriculture)
- อุตสาหกรรมฐานชีวภาพ (Bio-based Industry)



EECi and Modern Agriculture

Phenomics Greenhouse



Plant Factory



UAV Sandbox & AI for Precision Agriculture



ITAP

บริษัท ลอฟท์ บิโอดอร์ จำกัด



EEC
EASTERN ECONOMIC CORRIDOR
THE PRIME GATEWAY TO ASIA

GISTDA

CAAT
The Civil Aviation Authority of Thailand

IBM



R&I Partners

EECi and High Value Ingredients and Biochemicals



Food Supplement and Nutraceuticals:

- Functional Ingredients
- Flavor Enhancer
- Super Antioxidants
- Alternative Proteins
- Specialty Carbohydrates
- High Value Fatty Acids

Cosmeceutical:

- Bioactive Compounds

Biochemical & Biomaterials:

- Bio-Plastics
- Bio-Surfactants
- Bio-Controls
- Industrial Enzymes

Non-GMP Biorefinery Pilot Plant (Generic and Open Platform)

Herbs and Agro Wastes

R&I Partners



Sumitomo Heavy Industries
Process Equipment Co.,Ltd.



'TORAY'

EECi Biorefinery Ecosystem

4 Joint Labs & Centers of Excellence (Research Work & Engineering Capability)

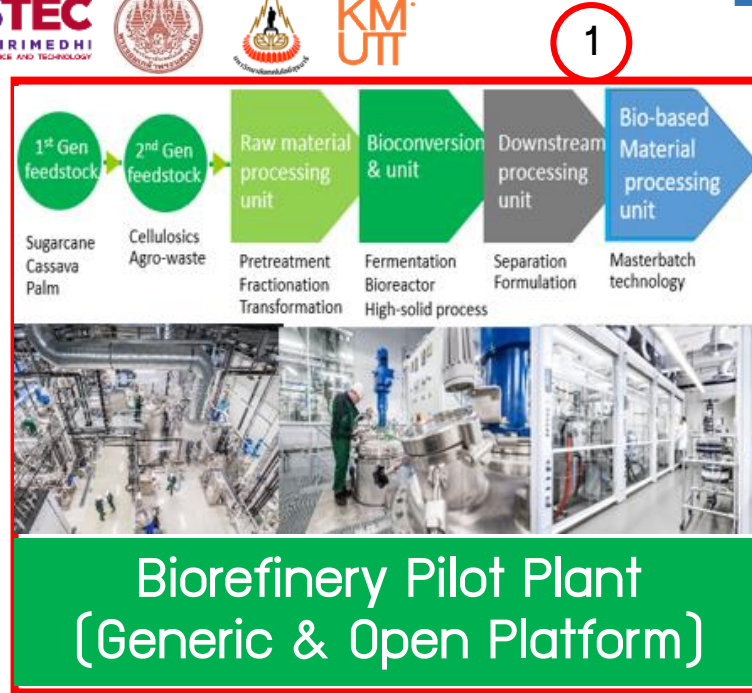


3 International Research Projects & Partnership



2 Professional Management

10 NQI for Biorefinery



9 Proprietary Tech. Providers

5 Human Resource Development



6 Demand-Led Consortium



7 Domestics & International Users

8 R&I Funding & Market Jumpstart

EECi Progress Updates



EECi Ground Breaking Ceremony by PM



EECi Headquarter Complete Jun 2021

Ready to Move in
Oct 2021

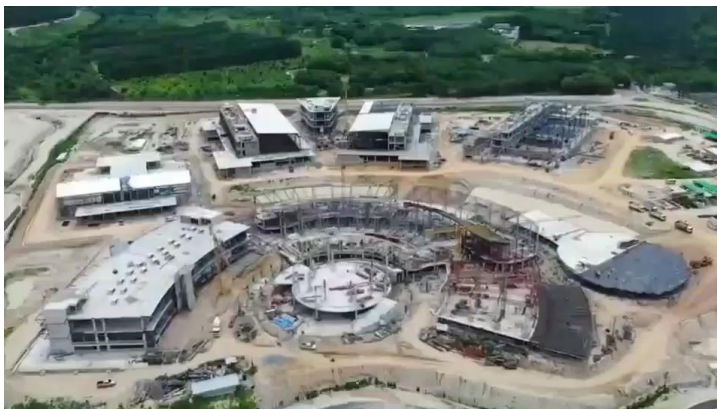
2019

2020

2021

2022

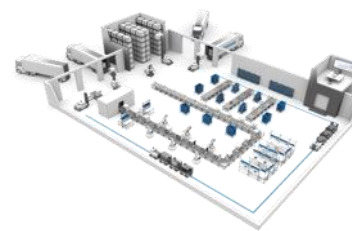
Progress **50%** (as of October 2020)



Biorefinery
Pilot Plant
(2020-2022)



Greenhouse/
Plant Factory
(2021-2023)



Sustainable
Manufacturing
Center (SMC)
(2021-2025)



3-GeV Synchrotron
Facility
(2021-2027)

Opportunities for Partnership

- ◎ Localization of **Advanced Technology** for **Thailand and ASEAN Market**
- ◎ Joint Research between **International Firm & Research Institutes** with **Local Counterparts**
- ◎ Shared use of **Advanced Translational Infrastructure** in EECi
- ◎ Joint Development of **Talents**
- ◎ Other Win-Win Partnering Arrangement!





Privileges & Incentives



Translational
R&D Infra.



Advanced
National Quality
Infrastructure
(NQI)



Regulatory
Sandbox



Smart Visa for
international
experts



Advanced
Technology
Development
Through Open
Innovation



13 years
(maximum)
corporate
income tax
exemption



17% flat rate
personal income tax
for international
(and reverse brain
drain) experts



Pool of
Talents

EECi

Eastern Economic Corridor
of Innovation



Bangkok Office

111 Thailand Science Park,
Phahonyothin Road,
Khlong Nueng,
Khlong Luang,
Pathum Thaini
12120, Thailand



+66 2564 8000



info@eeci.or.th



www.eeci.or.th

